

CellFree Sciences Co., Ltd.

Robust Tool for Protein Research ; Wheat Germ Cell-Free Protein Expression System

Date/Time : 28th February 2014 10:30 AM-12:00 AM

Venue : #01-02 Active Learning Room, MD6

(Center for Translational medicine) 14 Medical Drive

National University of Singapore



wheat

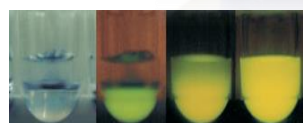
wheat germ



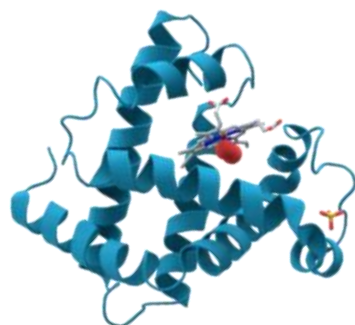
wheat germ extract
WEPRO®



Protein Synthesizer
Protelist® DTII



expression



Program

Introduction and application for wheat germ cell-free protein expression system

Professor Yuzuru Tozawa

Proteo-Science Center, Ehime University, Japan

Development of a new strategy utilizing cellular APOBEC3 enzymes against HIV

Dr. Yasumasa Iwatani

Chief, Laboratory of Infectious Diseases,
Department of Infectious Diseases and immunology,
Clinical Research Center, National Hospital Organization
Nagoya Medical Center, Japan

Chairperson :

Professor Naoki Yamamoto

Department of Microbiology, Yong Loo Lin School of
Medicine, National University of Singapore

Official Distributor



Scientific Hub Services Pte Ltd (SHS)
3 Science Park Drive, #02-12/25 The Franklin, Suite 2 Singapore
Science Park I, Singapore 118223
Email: suzuki@sci-hub.com Website: <http://www.sci-hub.com>

